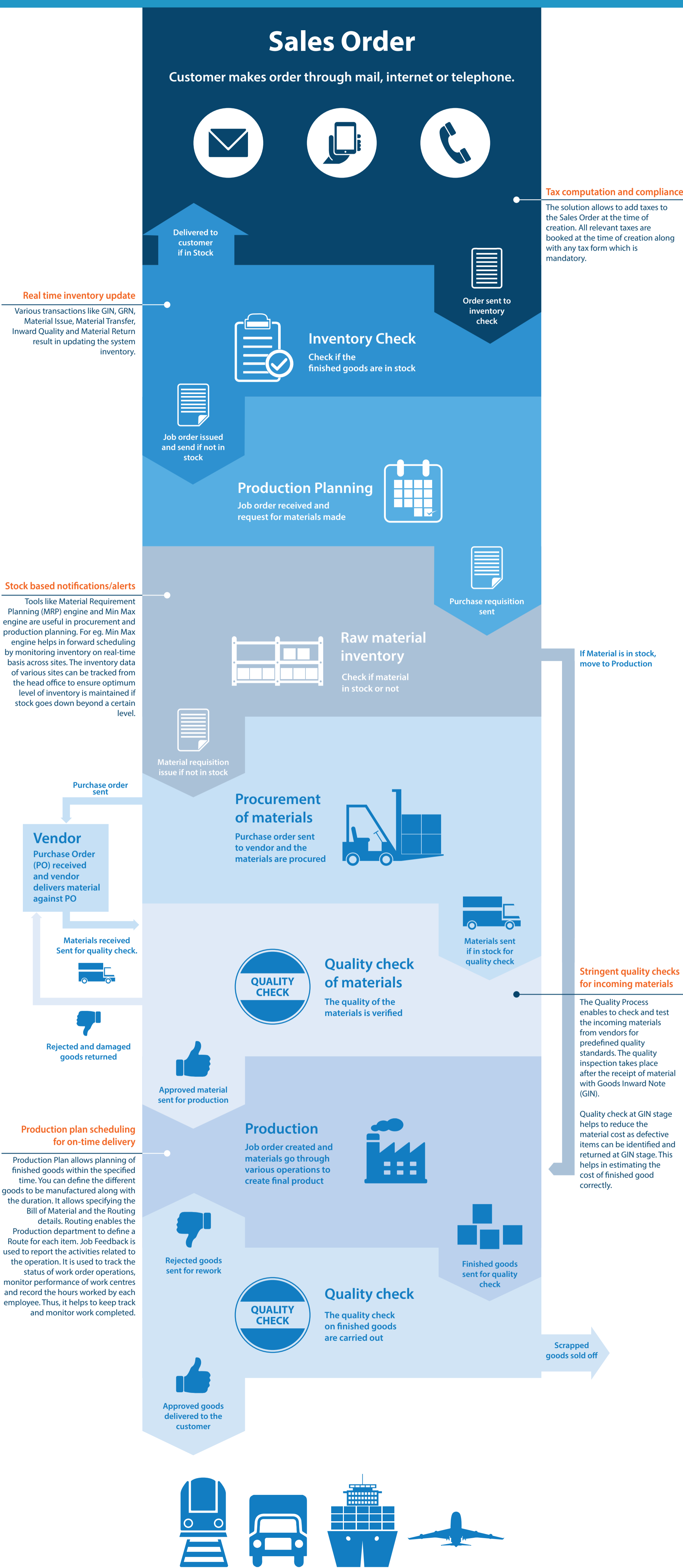


iON MANUFACTURING SOLUTION

At iON, we make the complex manufacturing process look simple by connecting the different parts of the operations. The iON Cloud ERP facilitates procurement, production and sales by integrating inventory with the finance and accountfunction. The solution supports planning and execution by connecting the production plan with the shop floor. Production plan for instance, would tell your operations to anticipate the right amount of sales, and accordingly initiate the right quantity of procurement.



Sales Order

Customer makes order through mail, internet or telephone.



Delivered to customer if in Stock



Order sent to inventory check

Tax computation and compliance
The solution allows to add taxes to the Sales Order at the time of creation. All relevant taxes are booked at the time of creation along with any tax form which is mandatory.

Real time inventory update

Various transactions like GIN, GRN, Material Issue, Material Transfer, Inward Quality and Material Return result in updating the system inventory.



Inventory Check

Check if the finished goods are in stock



Job order issued and send if not in stock

Production Planning

Job order received and request for materials made



Purchase requisition sent

Stock based notifications/alerts

Tools like Material Requirement Planning (MRP) engine and Min Max engine are useful in procurement and production planning. For eg. Min Max engine helps in forward scheduling by monitoring inventory on real-time basis across sites. The inventory data of various sites can be tracked from the head office to ensure optimum level of inventory is maintained if stock goes down beyond a certain level.



Raw material inventory

Check if material in stock or not

If Material is in stock, move to Production



Material requisition issue if not in stock

Purchase order sent

Procurement of materials

Purchase order sent to vendor and the materials are procured



Materials sent if in stock for quality check

Stringent quality checks for incoming materials

The Quality Process enables to check and test the incoming materials from vendors for predefined quality standards. The quality inspection takes place after the receipt of material with Goods Inward Note (GIN).

Quality check at GIN stage helps to reduce the material cost as defective items can be identified and returned at GIN stage. This helps in estimating the cost of finished good correctly.

Vendor
Purchase Order (PO) received and vendor delivers material against PO

Materials received Sent for quality check.



Rejected and damaged goods returned



Approved material sent for production

Production plan scheduling for on-time delivery

Production Plan allows planning of finished goods within the specified time. You can define the different goods to be manufactured along with the duration. It allows specifying the Bill of Material and the Routing details. Routing enables the Production department to define a Route for each item. Job Feedback is used to report the activities related to the operation. It is used to track the status of work order operations, monitor performance of work centres and record the hours worked by each employee. Thus, it helps to keep track and monitor work completed.

Production

Job order created and materials go through various operations to create final product



Rejected goods sent for rework



Finished goods sent for quality check



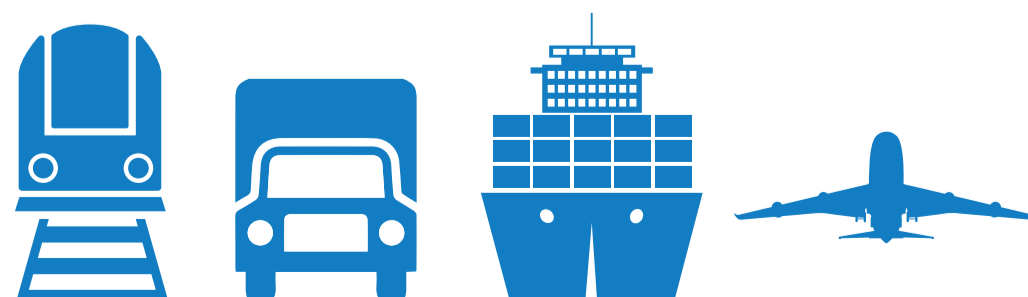
Quality check

The quality check on finished goods are carried out

Scrapped goods sold off



Approved goods delivered to the customer



Finished goods delivered to customer